

# South Cambridgeshire Crime and Disorder Reduction Partnership










## Performance Report

Q4 – 2010-11

<b>AUTHOR:</b>	Research Group – Cambridgeshire County Council
<b>CONTACT NO:</b>	01223 715310
<b>DATE:</b>	April 2011
<b>PRODUCED FOR:</b>	South Cambridgeshire CCRP

## South Cambridgeshire Crime and Disorder Reduction Partnership Performance Summary

*This report is produced to support the performance management processes for the CDRP and covers only those priorities where data is currently available.*

<u>CDRP Priorities<sup>1</sup> (all by end 2009-10)</u>	<u>Progress</u>
<b><i>Dwelling Burglary</i></b>	
<ul style="list-style-type: none"> <li>• Reduction in dwelling burglary below 2008-09 level</li> </ul> <p><u>This target has been met – 24% decrease since 2008/9</u></p>	
<b><i>Vehicle Crime</i></b>	
<ul style="list-style-type: none"> <li>• Reduction in thefts of vehicles below 2008-09 level</li> </ul> <p><u>This target has been met – 40% decrease since 2008/9</u></p>	
<ul style="list-style-type: none"> <li>• Reduction in thefts from a vehicle below 2008-09 level</li> </ul> <p><u>This target has been met – 27% decrease since 2008/9</u></p>	
<b><i>Domestic Violence</i></b>	
<ul style="list-style-type: none"> <li>• To have a rate of repeat incidents of domestic violence no higher than 28% (NI – 32)<sup>2</sup></li> <li>• 50% increase in referrals to the IDVAS</li> </ul>	 <div style="border: 1px solid black; padding: 2px; width: fit-content; margin: auto;">n/a</div>
<b>Key</b>	
Better position	
No change or still some concern	
Worse position	

**Areas for concern:**

None

<sup>1</sup> Based upon content of 2008-2011 rolling plan

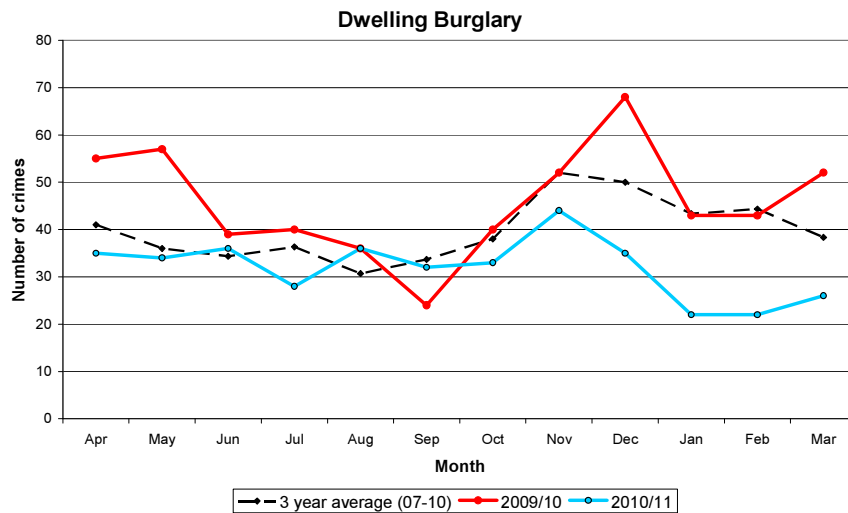
<sup>2</sup> Local Area Agreement - Countywide target

**1. DWELLING BURGLARY**

The CDRP requirement is to reduce the number of recorded offences below levels for 2008-09.

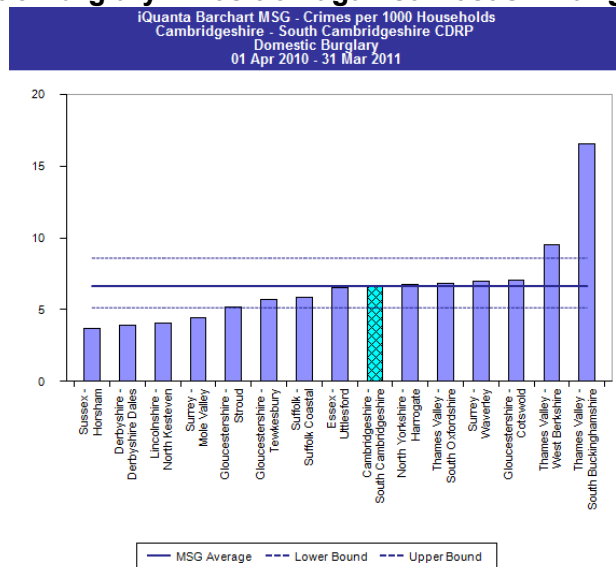
There were 70 offences in the final quarter of 2010/11, as compared to 138 in 2009/10. Monthly totals have remained consistently below those recorded in the previous year, and in 2008/9. This target has been met, with a 24% decrease in incidents.

**Figure 1.1: Dwelling Burglary**



South Cambridgeshire stood in 5<sup>th</sup> position when compared to its most similar family group members in quarter four, a dramatic improvement from 12<sup>th</sup> position during quarters 2 and 3. For the full year 2010/11, the district came in at 9<sup>th</sup> position and average compared to its most similar group.

**Figure 1.2: Domestic Burglary – Position against most similar group<sup>3</sup>**



<sup>3</sup> iQuanta is updated monthly approximately 24<sup>th</sup> of each month. Therefore in the report for this quarter the most recent data available on iQuanta is the period ending May 2010.

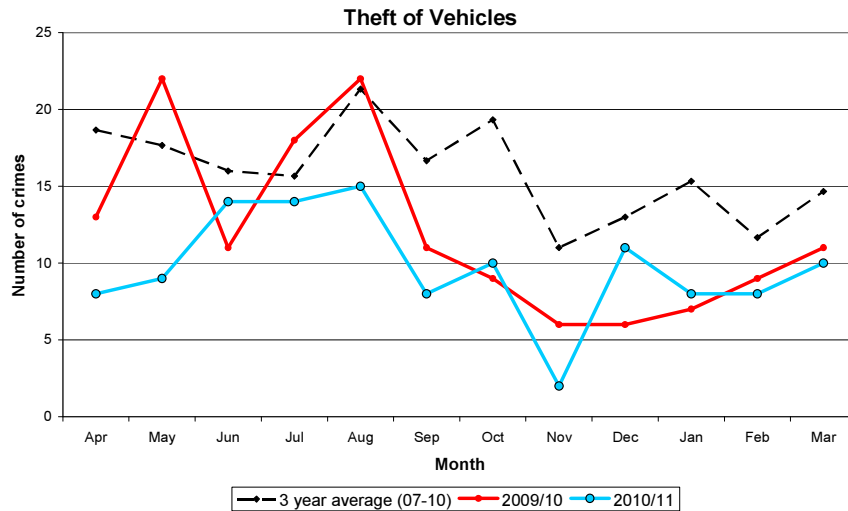
**2. VEHICLE CRIME**

**Theft Of Vehicles**

The CDRP requirement is for reduction in thefts of vehicles below 2008-09 levels.

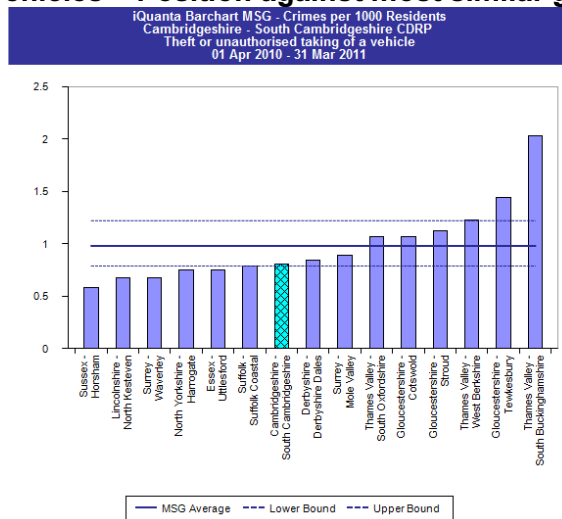
For the final quarter of 2010/11, 26 incidents of vehicle theft were recorded, as compared to 29 in 2008/9. This is also below figures recorded for the previous year (2009/10). For the full financial year, **117** crimes were recorded, a reduction of 40% on figures for 2008/9. This target has therefore been met.

**Figure 2.1 Theft Of Vehicles**



For the fourth quarter of 2010/11, South Cambridgeshire stands at 7<sup>th</sup> when compared to most similar family group members. Looking at the year as a whole, the district also lies at 7<sup>th</sup> position, and average in comparison.

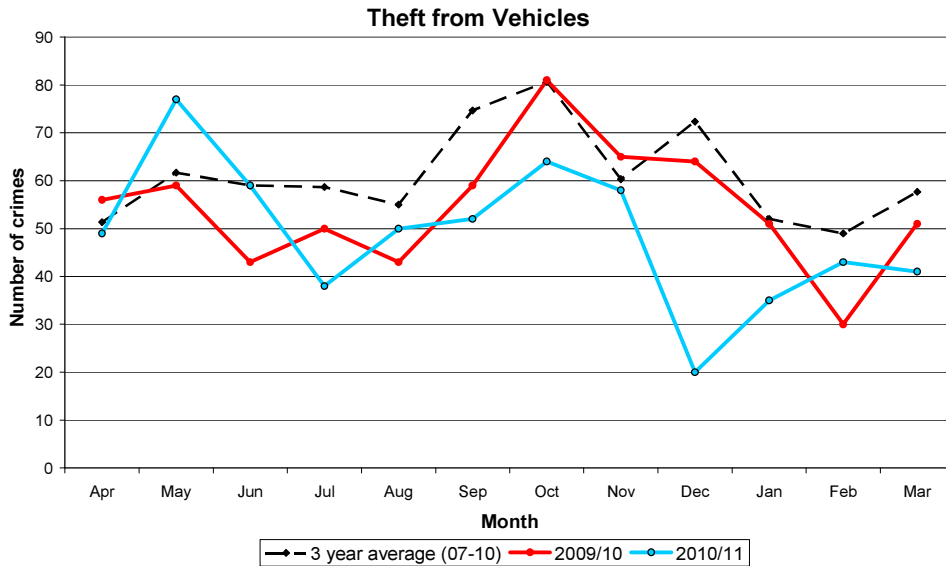
**Figure 2.2: Theft of Vehicles – Position against most similar group**



**Theft From Vehicles**

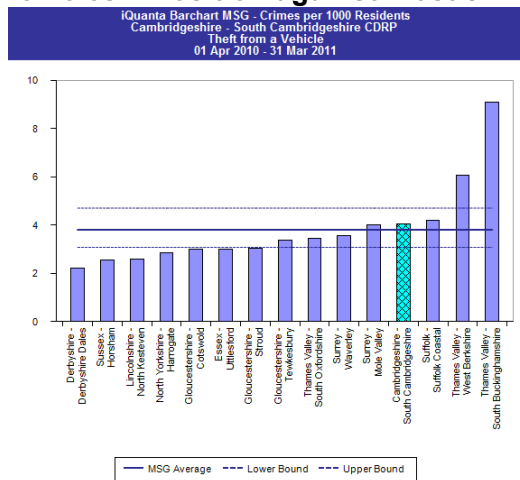
The CDRP requirement is for reduction in thefts from vehicles below 2008-09 levels. During the final quarter of 2010/11, **119** incidents of vehicle theft were recorded, as compared to 172 in 2008/9. For the full financial year, **586** crimes were recorded, a 27% decrease on 2008/9. This target has therefore been achieved.

**Figure 2.3: Theft From Vehicles**



For the fourth quarter the district stands at 10<sup>th</sup> position when compared to its most similar family group. Examining the full financial year we see that South Cambridgeshire comes in at 12<sup>th</sup> position and average in comparison to its most similar group members for Thefts from Vehicles. It should be noted however that despite the fact that the district remains within the “average” measure for iQuanta, performance should still be concerning as the numbers are skewed significantly by one poorly performing district.

**Figure 2.4: Theft from Vehicles – Position against most similar group**



**3. DOMESTIC VIOLENCE**

**Multi-Agency Risk Assessment Conference (MARAC)**

Cambridgeshire	FY 2008-09	FY 2009-10	FY 2010-11
Number of MARAC cases (Cambridgeshire)	271	399	407
NI 32 – Rate of repeat victimisation of MARAC cases	26%	27.5%	34.5%

The target for NI 32 is that the repeat rate should not be higher than 28%, a target which we have not yet met in 2010/11. The financial year 2008-09 was the baseline-setting year for this target.

**Independent Domestic Violence Advocacy Service (IDVAS)**

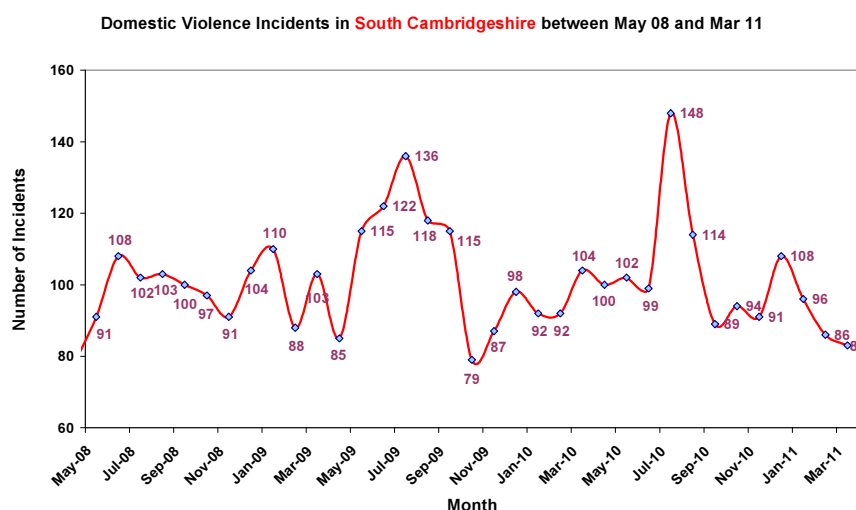
IDVAS works with high-risk cases across the county referred from Cambridgeshire Constabulary. The table below breaks down caseload by district for each quarter.

CDRP	Total 2009/10	2010-11 Q1	2010-11 Q2	2010-11 Q3	2010-11 Q4	Total 2010/11
Cambridge City	292	86	98	58	64	306
East Cambridgeshire	112	24	37	26	41	128
Fenland	212	34	36	38	50	158
Huntingdonshire	233	92	76	83	59	310
South Cambridgeshire	136	33	40	41	40	154
<b>Cambridgeshire</b>	<b>985</b>	<b>269</b>	<b>287</b>	<b>246</b>	<b>254</b>	<b>1,056</b>

During Q4 2010-11 South Cambridgeshire made up 16% of the referrals to the IDVAS. For the full financial year 2010/11, this district saw 128 cases referred to the IDVAS, 12% of the full countywide number.

**Police Incident data**

The chart below shows the number of domestic abuse incidents per month within the district up to March 2011. These are 'all incidents which have been closed as Domestic Incidents, either verbal or violent, where parties are over the age of 18. This measure is compliant with the ACPO definition of Domestic Abuse'.



265 Domestic Violence incidents were reported to the police during the final quarter of 2010/11 representing an increase on the same period for the previous year. The requirement is to increase the number of Domestic Violence Incidents reported to the police by March 2010 from the baseline of 2008-09. When examining the full financial year 2010/11, a total of 1,210 incidents were recorded, as compared to 1,175 in 2008/9. This target has therefore been achieved.